

# NAEC

**Metal Engineering & Fabrication  
Complete Solution**

---

**Energy Engineering & Fabrication  
Complete Solution**

---

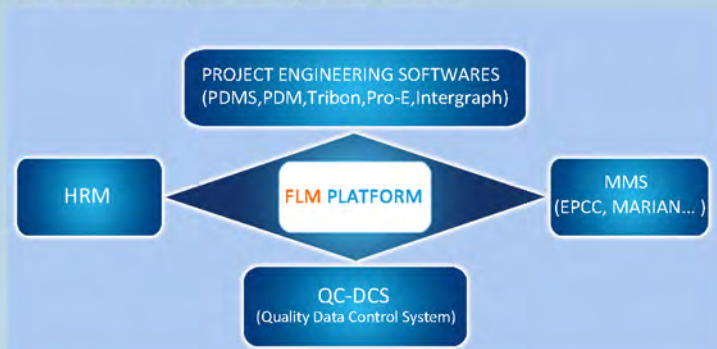
**Oil & Gas Engineering & Fabrication  
Complete Solution**

---

**Nanjing Auto Electric Co., Ltd.**

# Solution & Capabilities

## Fabrication Lifecycle Management Platform



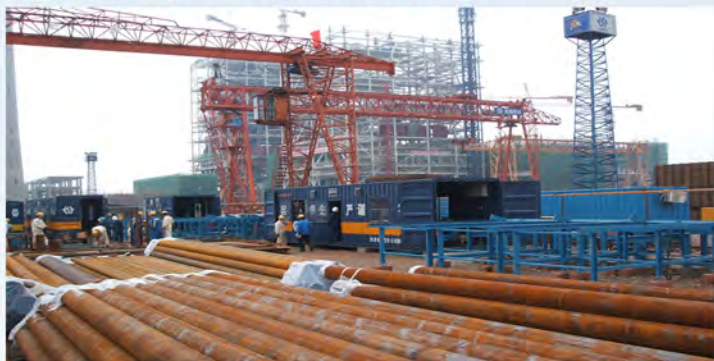
- Cover all fabrication stages from raw material storage to finished spool storage, controlling all quality information and process status information
- Easier for project management
- Extensively applied in automatic fabrication
- Greatly improve automation rate of fabrication
- Innovative fabrication engineering quality tracking & management software maximizes fabrication efficiency

## Workshop Type Pipe Spool Fabrication Solution



- Max. design capacity is 9,000 DI /day. Man hour / dia-inch can be as low as 0.25
- Automation fabrication rate can reach higher than 80%
- X-RAY first qualification rate:  $\geq 99.5\%$
- Apply programmed innovated WPS for various materials
- Mechanical performance meets Low-temperature impact test requirements
- Project implementation follows API650, ASME, AWS and other international standards

## Containerized Type Pipe Spool Fabrication Solution



- Suitable for onsite fabrication
- Automation fabrication rate can reach higher than 80%
- X-RAY first qualification rate:  $\geq 99.5\%$
- Mechanical performance meets Low-temperature impact test requirements
- Project implementation follows API650, ASME, AWS and other international standards

### Offshore Platform/Wind Tower/Pressure Vessel Fabrication Solution



- Suitable for offshore pipe pile / pipe rack diameter ranging from 500mm to 5,000mm
- Suitable for pressure vessel/ wind tower max. diameter can be up to 12m
- X-RAY first qualification rate:  $\geq 99.5\%$
- Workshop splicing max. length can be up to 72m. Suitable for thickness less than 80mm
- Able to integrate preheating, gouging, NDT devices
- Mechanical performance meets Low-temperature impact test requirements
- Project implementation follows API650, ASME, AWS and other international standards

### Tank Shell Prefabrication / On-site Construction Solution (Bottom-to-top)



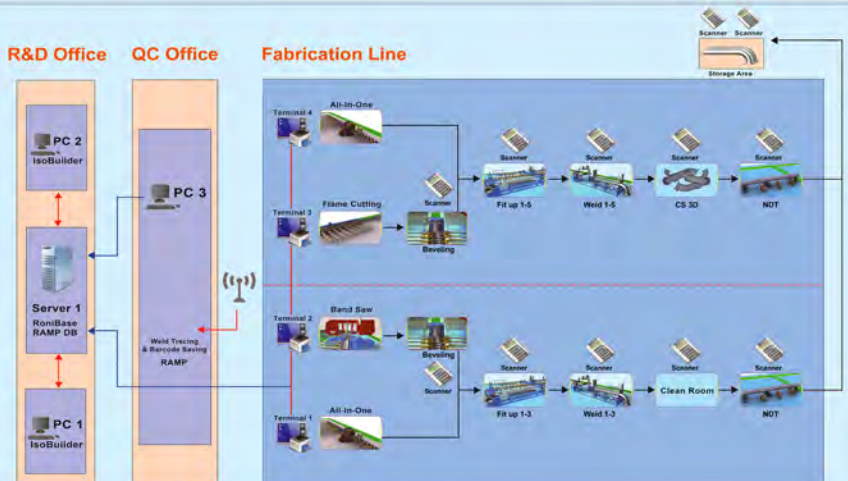
- Bottom-to-top construction method suitable for big diameter storage tank
- Adopt flow construction method. Support customer to finish one tank construction within one month with advanced construction solution
- X-RAY first qualification rate:  $\geq 99.5\%$
- Mechanical performance meets Low-temperature impact test requirements
- Project implementation follows API650, ASME, AWS and other international standards

### Tank Shell Prefabrication /On-site Construction Solution (Top-to-bottom)

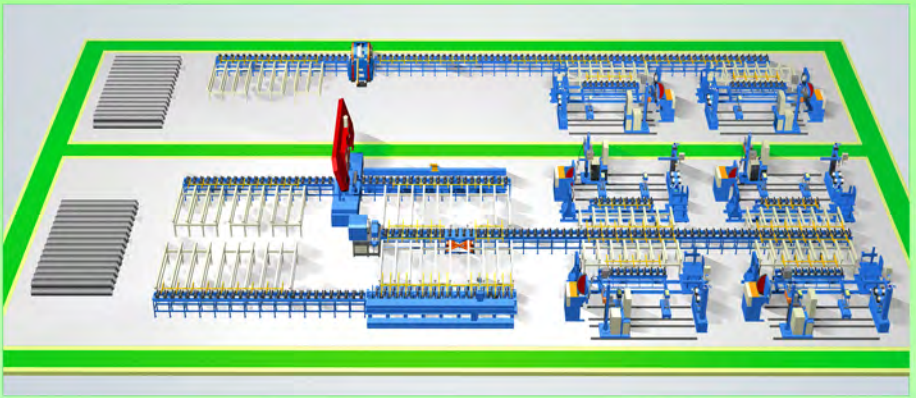


- Top-to-bottom construction method suitable for smaller dia. storage tank
- Equipped with hydraulic jacking system
- Adopt flow construction method. Support customer to finish one tank construction within one month with advanced construction solution
- X-RAY first qualification rate:  $\geq 99.5\%$
- Mechanical performance meets Low-temperature impact test requirements
- Project implementation follows API650, ASME, AWS and other international standards

# Fabrication Lifecycle Management Platform



# Pipe Spool Prefabrication & Welding Solution



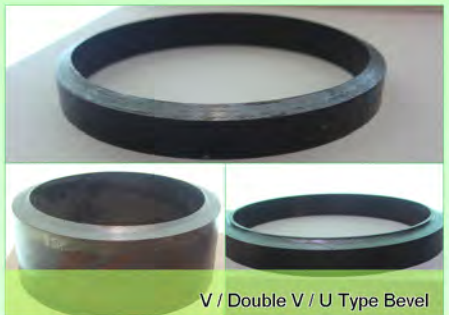
Five-axis CNC  
Flame / Plasma Pipe Cutting and Profiling Machine



Cutting & Profiling Effect



High Speed CNC Pipe End Beveling Machine



V / Double V / U Type Bevel



Multi-function Pipe Fitting-up Station



Fitting-up and Tacking Effect

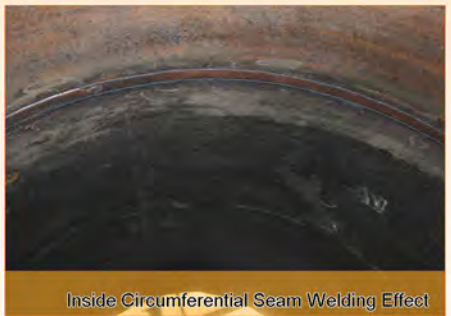
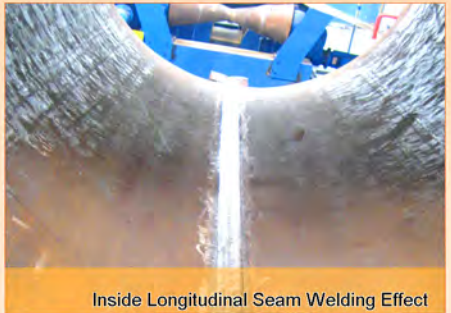
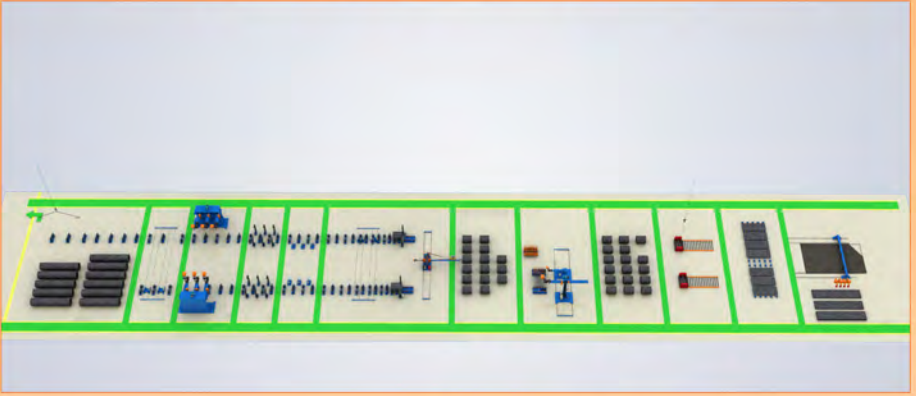


Automatic Pipe Welding Station

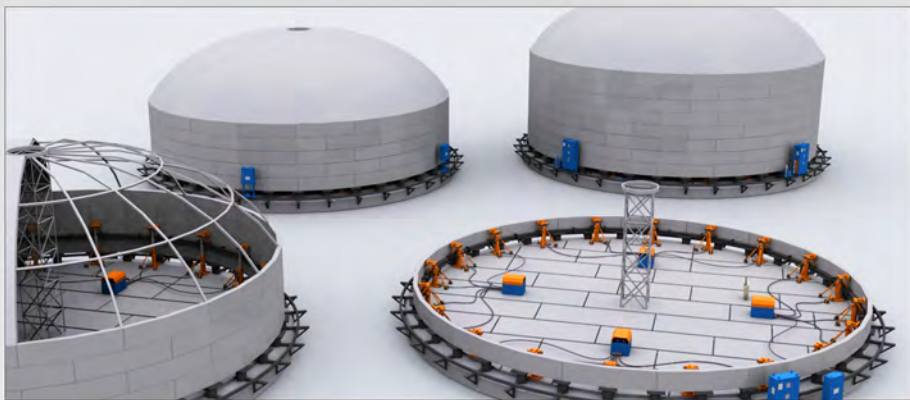


TIG Root Pass / RMD-MIG Root Pass / SAW Fill Effect

# Offshore Platform/ Wind Tower/ Pressure Vessel Prefabrication & Welding Solution



# Tank Shell Prefabrication & On-site Welding Solution



Single Head/Single Side Plate Milling Machine



U / X Type Bevel



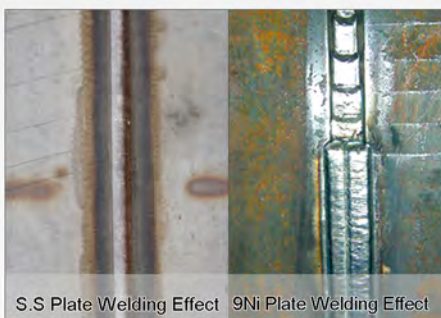
AGW



C. S Plate Welding Effect



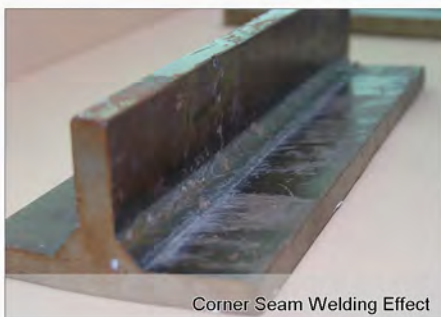
EGW



S.S Plate Welding Effect 9Ni Plate Welding Effect



Butt / Corner Seam Welding Machine



Corner Seam Welding Effect



[www.autowelds.com](http://www.autowelds.com)

E-mail: [foreigntrade@autowelds.com](mailto:foreigntrade@autowelds.com)

ADD: West Qingshuiting Road, Jiangning Economic and  
Technical Development Zone, Nanjing, China

TEL: 86 25 52781628 FAX: 86 25 52782618